



Drive & Automation Product Specifications



C Series Freestanding Capstan Motor Sizing & Design Questionnaires

Line Pull (Kg)	Start Pull (Kg)	Required Motor Power (Kw @ 50Hz)				
		10m/min	15 m/min	20 m/min	25 m/min	30 m/min
1000	2000	2.2	3	4	4	5.5
1500	3000	3	4	5.5	7.5	7.5
2000	4000	4	5.5	7.5	11	11
2500	5000	5.5	7.5	11	11	15
3000	6000	5.5	7.5	11	15	18.5
4000	8000	7.5	11	15	18.5	22
5000	10000	11	15	22	22	30

Design Questionnaires:

Start Line Pull Capacity		Rotation	
Continuous Line Pull Capacity		Motor Brake	
Line Speed Capacity		Foot Switch	
Available Power Supply		Motor Space Heater	
EXD / IP Requirements		Control Box Space Heater	

- Motor power based on standard 50 Hz motors running under 50 Hz power supply. 60 Hz motors are also available
- Standard 50 Hz motor runs under 60 Hz with different power. Consult us for changes in motor torque, line speed and motor power with your requirements

C Series Capstan Standard Specification Codes

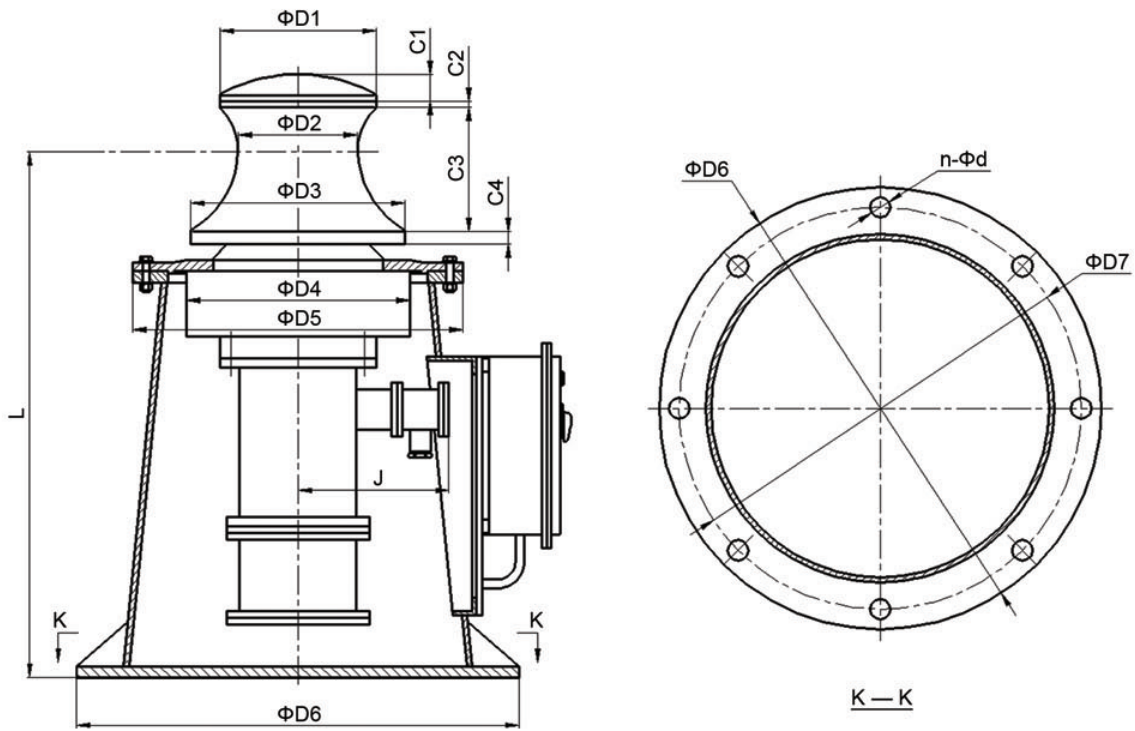
Series	C		
Style	A – Integrated *	B – Free Standing	
Line Pull (MT)	1 – 5		
Line Speed (m / min.)	10 – 30		
Hazardous Classification	A – Non Hazardous *	B – Class 1 Div. 2	C – Class 1 Div. 1
Protection	A – IP55 *	B – IP56	
Rotation	A – Single Direction *	B – Single Direction with Back Stop	C – Reversible
Motor Brake	A – Without *	B – With	
Foot Switch	A – Without *	B – With	
Motor Space Heater	A – Without *	B – With	
Control Box Space Heater	A – Without *	B – With	
Power Voltage (V)	220 – 660 (3 Ph)		
Power Frequency (Hz)	50 – 60		

- * Indicates Zalda Technology C Series standard
- Example: Model C-B-2-10-C-B-C-B-B-A-A-440-60 Stands For: Free standing capstan, with 2T (44000 lb / 20KN) Line Pull @ 10m / min (30fpm) line speed, Class 1 Div. 1 Classification, IP56 Protection, Reversible Motor with Brake, Foot Switch, without Space Heaters, 440V / 60Hz / 3Ph
- Most features can be customized



Drive & Automation Product Specifications

**C Series Freestanding Capstan
Dimension Table (Typical Models)**



Line Pull (T)	Line Speed (m/min)	Motor Power (KW)	DIMENSIONS (mm)														Anchor Bolts (mm)
			D1	D2	D3	D4	D5	D6	D7	C1	C2	C3	C4	J	L	n-d	
1	20	4	350	280	450	300	700	850	790	55	25	273	30	320	1100	6-24	6-M20
1.5	20	5.5	350	280	450	300	700	850	790	55	25	273	30	320	1100	8-24	8-M20
2	20	7.5	350	280	450	360	700	850	790	55	30	273	30	320	1100	8-28	8-M24
3	20	11	350	280	450	360	720	900	800	55	30	273	30	320	1100	8-28	8-M24
4	20	15	350	280	480	360	740	900	800	55	30	273	50	320	1100	10-28	10-M24

- All dimensions in mm
- All dimensions listed are subject to change without notice